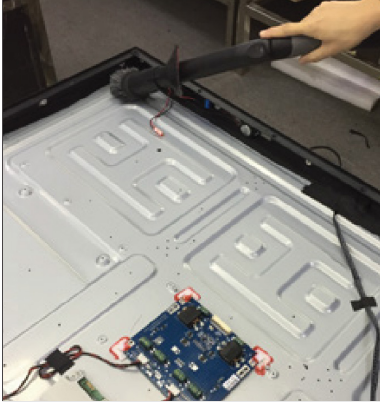


Step 1 Thoroughly clean the glass and television using a vacuum.

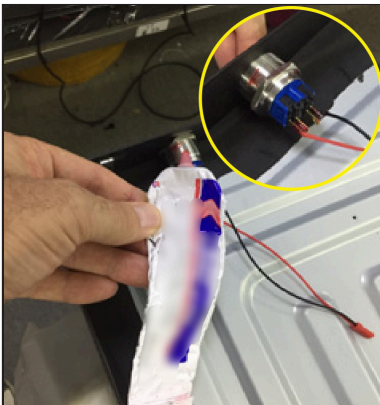


⚠ HAZARDOUS VOLTAGE. Contact will cause electric shock or burn.

Turn off and lock out system power before servicing.

i Ensure all surfaces are free from dust and debris prior to closing the TV enclosure. For additional instructions, kindly consult the attached cleaning guide for glass below.

Step 2 Apply a silicone adhesive to affix the switch securely in place.



i Remove any excess silicone residue from the inner frames and reattach them to the edges of the TV using screws.

Step 3 Reposition the IR receiver and fasten it securely in place using tape.



i Reconnect all cables and cords.

⚠ Affix the cords securely in place using electrical tape.

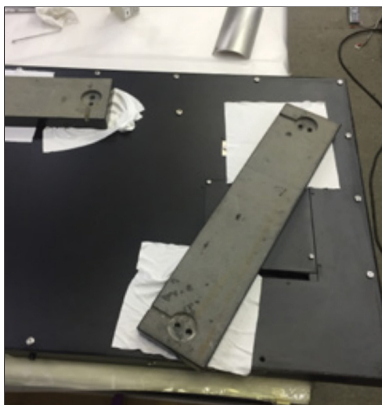
Step 4 Apply a layer of silicone to the inner frame.



Step 5 Place a cover over the TV to protect it.



Step 6 Attach weights while ensuring that the product is not damaged, by using fabric as a protective layer.



Cleaning Guide for Glass

- It is recommended to use a solution containing 70% or higher concentration of alcohol and a clean, non-abrasive cloth. Both sides of the glass can be safely cleaned with this method.
- Prior to closing, it is advisable to employ a vacuum machine to ensure any remaining debris is removed from the surface.

MAINTENANCE TIPS

- **Cleaning:** Dirt, dust, and other debris can accumulate on your outdoor TV over time, which can affect its performance. You can use a microfiber cloth to wipe down the screen and exterior of your TV regularly.
- **Power source:** Make sure your Cosmos Outdoor TV is connected to a stable power source. Unstable power sources can cause damage to the TV's internal components. It is also a good idea to use a surge protector to prevent power surges from damaging your TV.
- **Weatherproofing:** Outdoor TVs are built to withstand the elements, but it is important to make sure that the weatherproofing is intact. Check the TV's gaskets and seals to make sure they are in good condition. If you notice any cracks or gaps, contact a professional for repairs.
- **Remote control:** If your TV comes with a remote control, make sure it is in good working condition. Replace the batteries regularly and keep it clean.
- **Firmware updates:** Check the manufacturer's website for any firmware updates for your Cosmos Outdoor TV. Updating the firmware can improve performance and fix bugs.
- **Professional repairs:** If your TV requires repairs beyond routine maintenance, it is best to contact a professional. Attempting to repair the TV yourself can be dangerous and may void the warranty.
- **Winter storage:** If you live in an area with harsh winters, it is important to store your Cosmos Outdoor TV properly. Make sure it is stored in a dry, temperature-controlled location, and cover it with a protective cover to prevent dust and debris from accumulating.