

User's Guide on How to Open the TV Panel of Cosmos Outdoor TV

COSMOS™

Step 1 Unscrew TV case and carefully trim the silicone on the sides of the TV panel and gently remove silicone lid using a flat screwdriver



⚠ HAZARDOUS VOLTAGE. Contact will cause electric shock or burn.

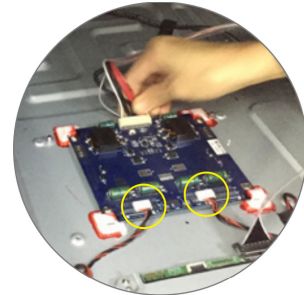
Turn off and lock out system power before servicing.

i Store screws properly after removal to prevent misplacement. Misplacing the screws may cause difficulty in reassembling the TV.

Step 2 After opening the back cover of the TV, disconnect the wires from the middle board to separate the panels.



⚠ Do not remove the cords circled in the image below.



Step 3 Detach the TV Frame and unscrew for lifting.



Step 4 Remove the black tape wrapped around the TV panel.



Step 5 Using pliers, carefully remove the white padding from the TV panel.



Step 6 Carefully remove the TV panel from its mount.



i It should be emphasized that the procedure of opening the TV panel can be hazardous and must only be attempted by trained technicians or individuals with appropriate training. If you feel uncertain or uncomfortable performing these steps, it is recommended to seek the assistance of a professional.