

# User's Guide on Disabling the Ocea TV Fan

**Step 1** Place the Ocea TV on a flat surface. Unscrew TV panel and carefully open.

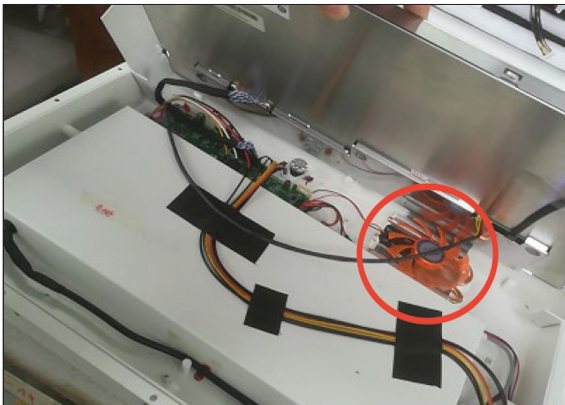


**⚠ HAZARDOUS VOLTAGE. Contact will cause electric shock or burn.**

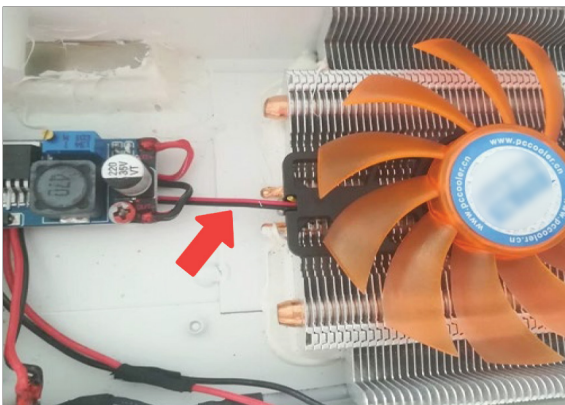
Turn off and lock out system power before servicing.

**i** Store screws properly after removal to prevent misplacement. Misplacing the screws may cause difficulty in reassembling the TV.

**Step 2** Locate the fan behind the glass panel board. Identify the wires that connect the fan to the TV's internal components.



**Step 3** Disable the fan by cutting these wires. After disabling the fan, reassemble the TV and reconnect the power.



**i** Disabling the fan may lead to increased temperature within the TV, which can affect its performance and potentially cause overheating. It is recommended to monitor the TV's temperature during extended usage and ensure proper ventilation for heat dissipation.

**⚠** If you reside in a region with a warm climate or if you have any reservations regarding the deactivation of the fan, it is advisable to seek guidance from a qualified professional or contact the manufacturer for proper instructions prior to proceeding.

**Step 4** Once finish disabling the TV fan, carefully reattach the case onto the TV and secure it with the screws.