

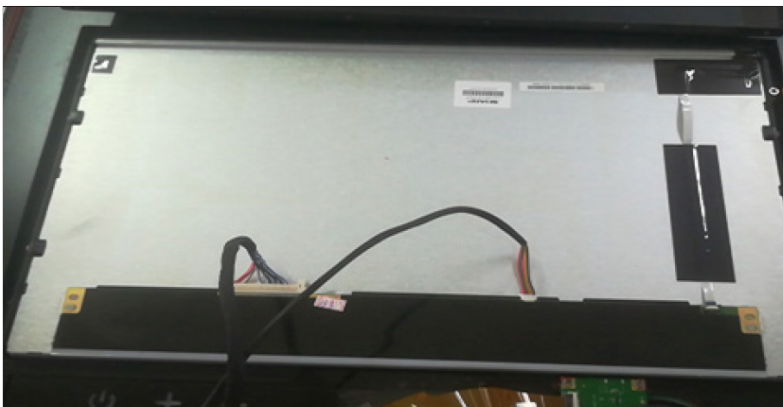
Step 1 Unscrew TV case and carefully open.



HAZARDOUS VOLTAGE. Contact will cause electric shock or burn.

Turn off and lock out system power before servicing.

Step 2 Detach the TV case and unscrew the panel for lifting.



Store screws properly after removal to prevent misplacement. Misplacing the screws may cause difficulty in reassembling the TV.

Use precise screwdriver to prevent damage.

Step 3 Gently open TV panel and begin by wiping the edges.



Utilize a gentle, lint-free cloth to wipe the internal components of the TV and eliminate any dust or dirt buildup.

Ensure the screen is moisture-free and avoid excessive pressure to prevent screen damage.

Avoid sharp or abrasive materials when cleaning the TV panel. Do not use alcohol, ammonia, or any harsh chemicals to prevent permanent damage.

Step 4 Once finish cleaning the TV Panel, carefully reattach the case onto the TV and secure it with the screws.

