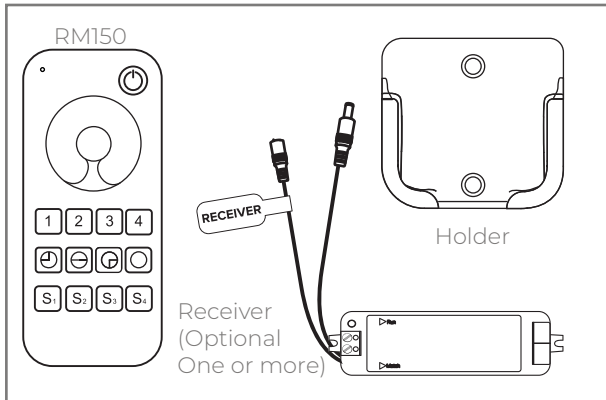
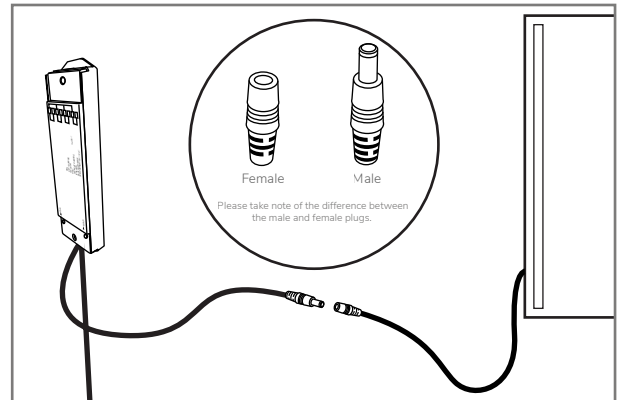


Instruction Manual



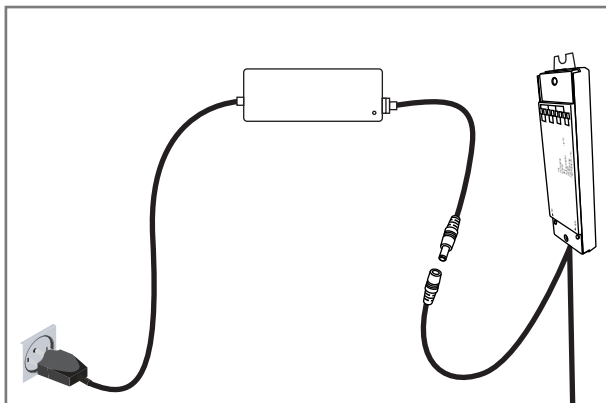
1 Check the items after receiving

Before installing, check to ensure that you have received all the package contents.



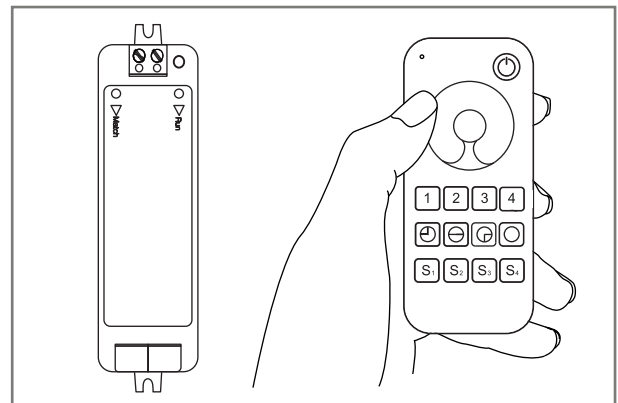
2 Connect the Receiver and the Mirror.

Take the end of the receiver with the male plug and connect it with the female plug of the mirror.



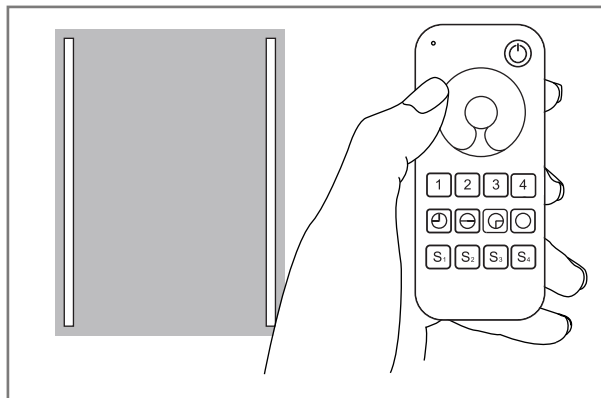
3 Connect the Receiver and the Power Supply

Take the female end of the receiver and connect it with the male plug of the power supply. Then plug the power supply to the power source.



4 Match the Remote and the Receiver.

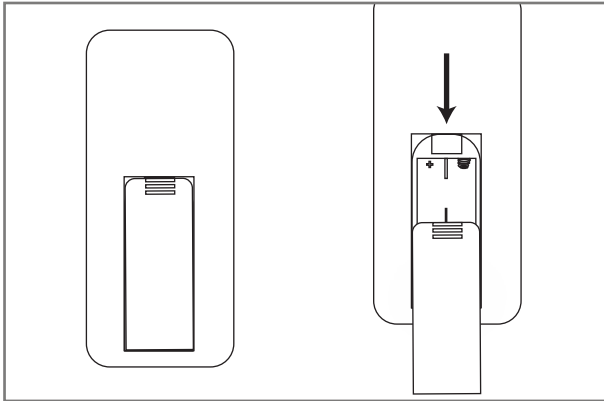
4-1. Press the match button on the receiver 1, the run light will start blinking, double-press the "1" button on the dimmer,
 4-2. Press the match button on the receiver 2, the run light will start blinking, double-press the "2" button on the dimmer, and so on.



5 Finished.

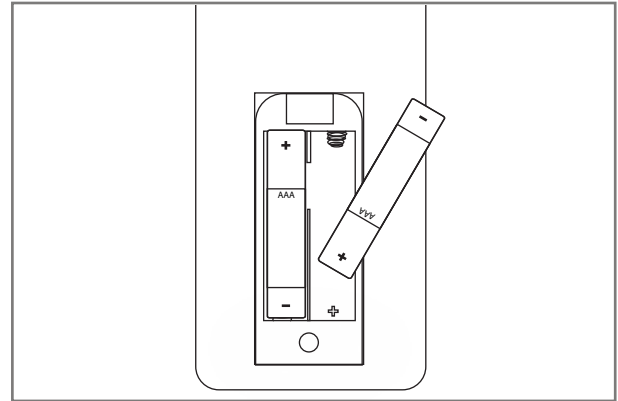
Your Remote is connected and ready to use.

Change Battery



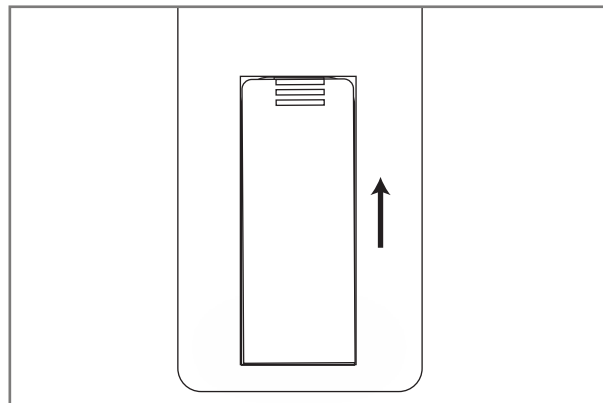
1 Remove the back Cover

Gently slide down the cover at the back of the remote.



2 Insert two AAA batteries.

Insert two AAA batteries into the remote. Ensure that the battery is placed correctly to match the corresponding positive or negative sign, otherwise it would not work.



4 Put the cover back.

Slide the cover back into the remote.